



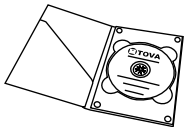
T.O.V.A. 8 INSTALLATION GUIDE

For more detailed information, please see the T.O.V.A. 8 users manual. For helpful videos, please see <http://videos.tovatest.com/>

Questions? Don't hesitate to contact us:

T.O.V.A. Technical Support
800.729.2886 (562.594.7700)
info@tovatest.com

T.O.V.A. 8 Kit Contents:



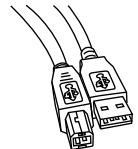
Installation and Boot CD



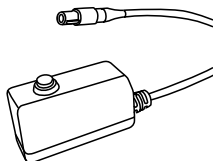
T.O.V.A. USB device



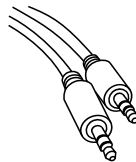
Manual(s)



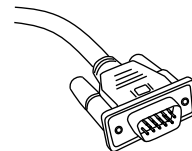
6-ft USB cable



T.O.V.A. microswitch



6-ft stereo audio cable



6-ft VGA (video) cable

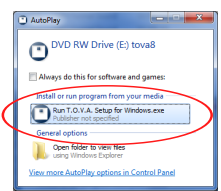
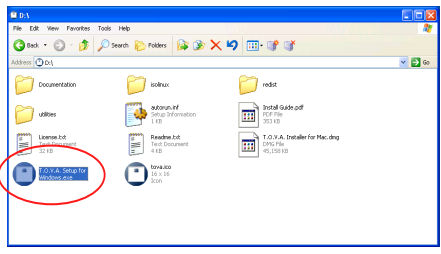
GET STARTED!

DO THIS FIRST

Step 1: Install the software

Installing on Windows:

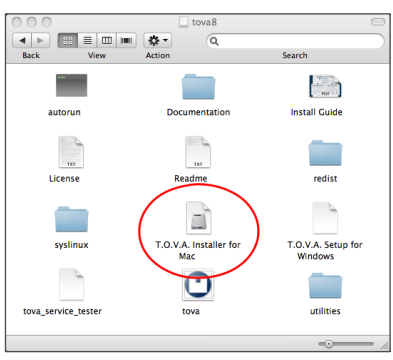
- You'll need to have administrator privileges.
- Insert the installation CD.
- Run the installer:



- We strongly recommend choosing the installer's default options.
- When you get to the T.O.V.A. configuration, go to step 2.

Installing on Mac OS X:

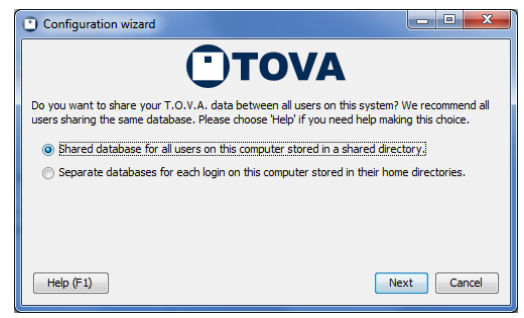
- You'll need to have administrator privileges.
- Insert the installation CD.
- Open the CD's icon in Finder.
- Double-click on the 'T.O.V.A. Setup for Mac' disk image:



- We strongly recommend choosing the installer's default options.
- When you get to the T.O.V.A. configuration, go to step 2.

Step 2: Configure the T.O.V.A.

- Choose which **database** installation you want:



We recommend choosing 'Shared database', the default option.

- Choose a hardware setup:

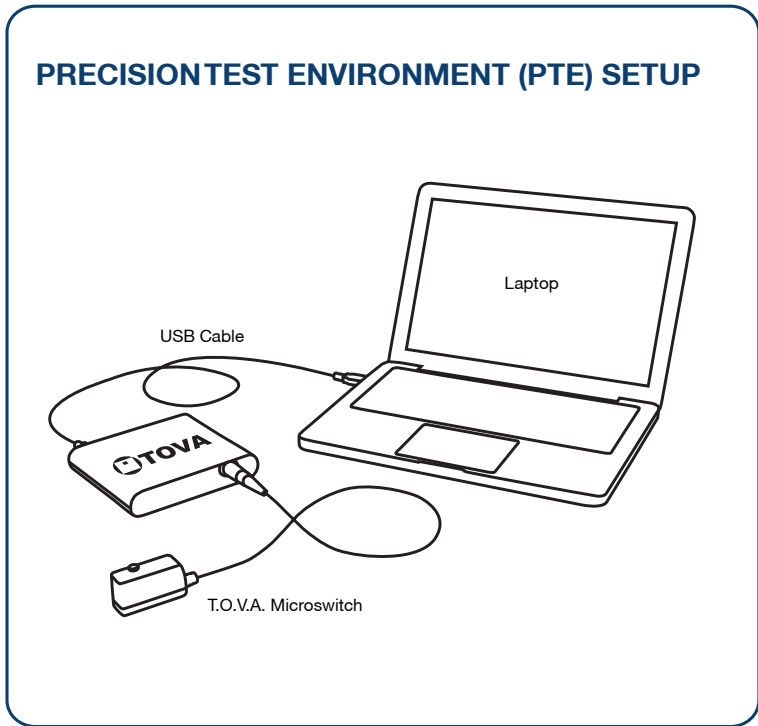
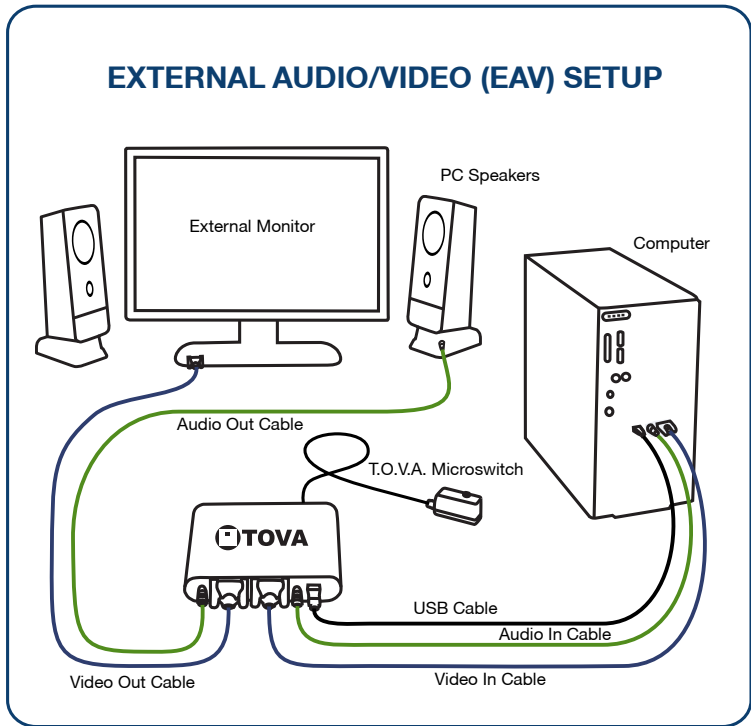


See the adjacent page for a description of the different hardware setups.



Step 3: Set up the hardware

Remember, do this step AFTER you've installed the software!



Use the External Audio/Video (EAV) setup if you:

- Have a standard desktop computer.
- Have a laptop with an external secondary monitor available.
- Don't want to reboot to give a test.

Features:

- No rebooting!

Use the Precision Test Environment (PTE) setup if you:

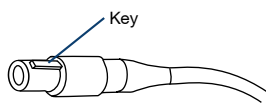
- Have a laptop and you don't have an external monitor to attach to it.
- Really don't want to hook up all of the cables that are necessary for the EAV, and don't mind rebooting to administer a test.

Features:

- Works with laptops
- Minimal hardware setup

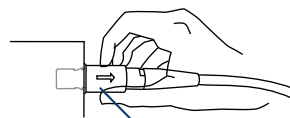
Microswitch Connector

The microswitch uses a keyed, locking connector. Use care when connecting and disconnecting.



Connect

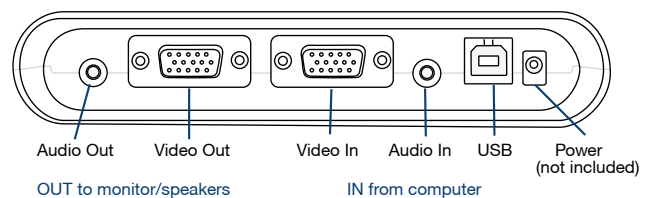
Align the key, gently push in until you hear a click.



Disconnect

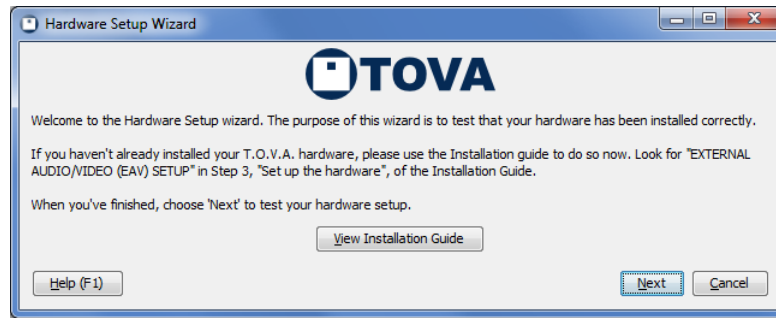
Gently pull on the textured outer sleeve.

T.O.V.A. Cable Guide



Step 4: Test the T.O.V.A. hardware

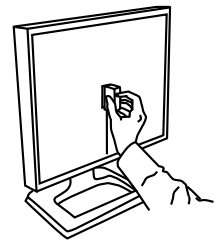
Once you have connected your T.O.V.A. hardware, you should be on the first page of the Hardware Setup wizard. Click 'Next' and follow the instructions to test the connections.



Step 5: Administer a T.O.V.A. test

We strongly recommend you administer a test to yourself or a colleague prior to using the T.O.V.A. in your work. Here's how to administer a T.O.V.A. test:

- 1 Run the T.O.V.A.
 - Windows:** Double-click the T.O.V.A. 8 icon on your desktop.
 - Mac:** In the applications folder, open the TOVA folder and double-click the TOVA application.
- 2 Select 'New Subject', fill in the subject information, and click 'Save'.
- 3 Select the subject you just created and select 'New Session'. Enter in the appropriate session information.
- 4 Select 'Launch'.
 - EAV Setup:** The session administration dialog will immediately appear.
 - PTE Setup:** Your computer will restart and automatically enter the PTE.
(Mac users: Insert CD and hold down the 'C' key while restarting.)
- 5 Select 'Calibrate display' to calibrate your monitor. Follow the on-screen instructions that explain how to hold the microswitch against your monitor and press the button.
- 6 Select 'Test instructions'.
- 7 Select 'Practice test'. Listen for the end-of-test tones to let you know the practice test is over.
- 8 Select 'T.O.V.A. test'. Listen for the end-of-test tones to let you know the test is over.
 - PTE Setup:** Select 'Done', and your system will restart into your regular operating system.
- 9 Select 'Save test results' to download the test you've just given. This will cost one test credit, but the USB device comes with five free test credits for this reason.
- 10 Select 'View report'.



Thank you for using the T.O.V.A. 8!